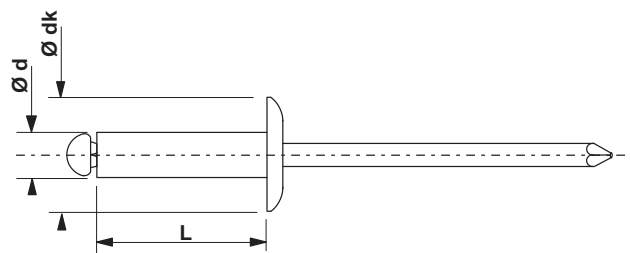


AC TRS

TÊTE RONDE STANDARD / DOMED HEAD

CONFORME À LA NORME / STANDARD COMPLIANT
NF EN ISO 15979



ACIER ZINGUÉ
ZINC PLATED STEEL

ACIER ZINGUÉ
ZINC PLATED STEEL

Ø	L	dk										
							BOÎTE CARTON CARDBOARD BOX	BOÎTE PLASTIQUE PLASTIC BOX PAR LOT DE 5 / PACK OF 5	BLISTER BLISTER PAR LOT DE 6 / PACK OF 6	QTE.	REF.	QTE.
mm	mm	mm	mm	mm	N	N	QTE.	REF.	QTE.	REF.	QTE.	REF.
3	6	6	1,0 - 3,0	3,2	1700	1200	1 000	104 130 061	-	-	-	-
	8		3,0 - 5,0				1 000	104 130 081	-	-	-	-
	10		5,0 - 7,0				1 000	104 130 101	-	-	-	-
	12		7,0 - 9,0				1 000	104 130 121	-	-	-	-
3,2	6	6,5	1,0 - 3,0	3,4	1800	1300	1 000	104 132 061	-	-	-	-
	8		3,0 - 5,0				1 000	104 132 081	400	104132081P	-	-
	10		5,0 - 7,0				1 000	104 132 101	400	104132101P	-	-
	12		7,0 - 9,0				1 000	104 132 121	-	-	-	-
	14		9,0 - 11,0				500	104 132 141	-	-	-	-
	16		11,0 - 13,0				500	104 132 161	-	-	-	-
4	6	8	0,5 - 2,0	4,2	3000	2000	500	104 140 061	300	104140061P	-	-
	8		2,0 - 4,0				500	104 140 081	300	104140081P	-	-
	10		4,0 - 6,0				500	104 140 101	300	104140101P	-	-
	12		6,0 - 8,0				500	104 140 121	300	104140121P	-	-
	14		8,0 - 10,0				500	104 140 141	-	-	-	-
	16		10,0 - 12,0				500	104 140 161	-	-	-	-
	18		12,0 - 14,0				500	104 140 181	-	-	-	-
	20		14,0 - 16,0				500	104 140 201	-	-	-	-
4,8	6	9,5	0,5 - 1,5	5,0	4600	3000	250	104 148 061	-	-	-	-
	8		1,0 - 3,0				250	104 148 081	-	-	-	-
	10		3,0 - 5,0				250	104 148 101	200	104148101P	-	-
	12		5,0 - 7,0				250	104 148 121	200	104148121P	-	-
	14		7,0 - 9,0				250	104 148 141	200	104148141P	-	-
	16		9,0 - 11,0				250	104 148 161	200	104148161P	-	-
	18		11,0 - 13,0				250	104 148 181	-	-	-	-
	20		13,0 - 15,0				250	104 148 201	-	-	-	-
	22		15,0 - 17,0				250	104 148 221	-	-	-	-
	25		18,0 - 20,0				250	104 148 251	-	-	-	-
	30		20,0 - 25,0				250	104 148 301	-	-	-	-
	6,4		10				12	2,0 - 4,0	6,6	7500	5500	250
12		4,0 - 6,0	250	104 164 121	-	-		-				-
18		10,0 - 12,0	250	104 164 181	-	-		-				-
22		14,0 - 16,0	250	104 164 221	-	-		-				-
25		16,0 - 19,0	250	104 164 251	-	-		-				-

SUR DEMANDE
UPON REQUEST

Ø 5 - 6 • Couleurs et traitements de surface spéciaux • TR
Ø 5 - 6 • Coloured rivets and special surface treatments • Reduced head